



# **MR SERIES** **GEARED** **TRACTION** **MACHINES**

# WE ARE SICOR

Sicor, five letters, a unique story going through the decades and travelling towards the future. It was 1981, in fact, when the ambitious project became tangible matter: what had previously been imagined on paper, became a real business! A company head-quartered in Rovereto, in the north-eastern Italian province of Trento, an Italian brand with sheer determination to succeed abroad.

To start with , SICOR means 200 employees , annual turnover of 60 million Euros.....with more than 20 million Euros invested in research projects, Over 60,000 machines produced per year : an ambitious, far sighted vision.

A simple rule: "to be and provide for what the market demands, being steadily focussed on customer care". With this view, SICOR supplies a wide range of traditional gearboxes, as well as gear-less motors for elevators, designed to provide safe, technically advanced solutions for any type of lifting platforms.

Its approach to innovation and design has been rewarded by international market leaders to the extent that many multinationals, in the sector, have chosen SICOR as a reliable partner for their production....





# SICOR INDIA

In consideration of demand of Premium Quality Product In Indian Elevator Market Established "Sisor Engineering India Pvt. Ltd.", which is a subsidiary of SICOR s.p.a. Italy ; the company is located in the suburbs of Chennai ,Tamilnadu.

**Product Range** - The company is specialized in the production of Geared and Gearless Traction machines for elevators with all the range of capacity and speed needed for the Indian market.

**Production Capacity & Factory Setup** - Current production capacity for traction machines of about 10,000 units/year. The factory is located in a owned shelter of 45,000 sqf & with more than 35 employees.

**Benchmark** - Sisor Engineering India use the same technology as SICOR s.p.a. and the critical components are imported from Italy. The machine are at the state of the art and to a very competitive price due to the development of a local supply chain in accordance to the quality requirement specified by SICOR s.p.a. Italy.

**Landmark - Successfully Running 15,000 Machines in Indian Elevator Market**

**Customers** - Since more than three years in India, we are Supplying Premium quality Traction machines with all modern Testing facilities to our business associate well known worldwide elevator company India & middle east.

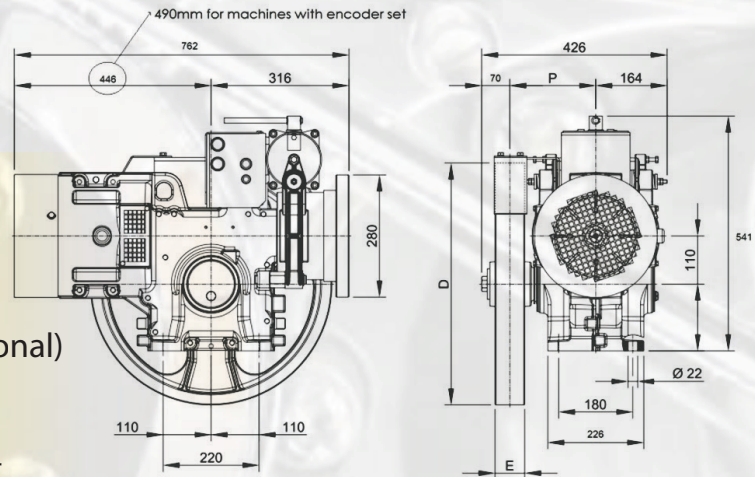


# MR10i

## Geared Traction Machine

### Technical Specification

Static Load (Kg)	2100*
Gear Ratio	1/43, 1/55, 2/55
Power range (Kw)	2.7, 3.7, 4.0
Brake Voltage (D.C.)	Standard- 110, 200 (Optional)
Sheave Range (mm)	340, 520, 550
Oil Capacity (ltr)	3.0
Machine weight (Kg)	220 (without bedplate)**



D – Diameter of traction sheave

E – Width of traction sheave

\* Conventional single wrap CSW

\*\* Standard machines are all Right Hand arrangement , Left Hand arrangement is available as a option for special requirement

\*\*\* weight of machine varies according to the selection of sheave, motor and drive system

ACVVVF      Power Supply 380 - 415 V      50Hz      Roping 1:1      Lift Travel: ≤ 30mtr

Model	Pass.	Payload (Kg)	Sync. Speed (mps)	G. Ratio	Motor (kW)	Motor Speed (Rpm)	Poles	Current (400V) (A)	Sheave Dia (mm)	Sheave Ropes (No./mm)
MR10i	6	408	0.60*	2/55	2.7	880	6	9.2	340	6xØ8
			1.00	2/55	4.0	1500	4	12.80	340	6xØ8

\* Max. lift travel 21 mtrs.

MR10i	6	408	0.63	1/43	2.7	990	6	9.00	520	3xØ10
			0.70	1/55	3.7	1410	4	9.00	520	3xØ10
			1.00*	1/43	3.7	1590	4	9.00	520	3xØ10

MR10i	6	408	0.63*	1/43	2.7	990	6	9.0	520	3xØ13
			0.70*	1/55	3.7	1410	4	9.0	520	3xØ13
			1.00*	1/43	4.0	1590	4	10.0	520	3xØ13

\* Max. lift travel 21 mtrs.

MR10i	6	408	0.70*	1/55	3.7	1330	4	9.0	550	3xØ13
-------	---	-----	-------	------	-----	------	---	-----	-----	-------

\* Max. lift travel 21 mtrs.

Machine Position: Top

Compartment Efficiency: 0,85

Counterweight balancing 50%

Assumed car weight 1.2 X duty load

Min. Wrapping Angle 150°

For travel height >30m compensating chains required

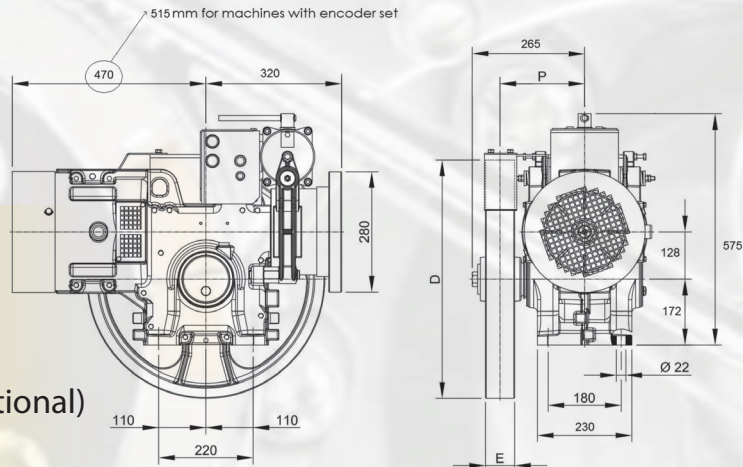


# MR13i

## Geared Traction Machine

### Technical Specification

Static Load (Kg)	2600*
Gear Ratio	1/43, 1/52, 2/53
Power range (Kw)	3.6 , 5.5
Brake Voltage (D.C.)	Standard- 110, 200 (Optional)
Sheave Range (mm)	340, 520, 550
Oil Capacity (ltr)	4.0
Machine weight (Kg)	230 (without bedplate)**



D – Diameter of traction sheave  
E – Width of traction sheave

\* Conventional single wrap CSW

\*\* Standard machines are all Right Hand arrangement , Left Hand arrangement is available as a option for special requirement

\*\*\* weight of machine varies according to the selection of sheave, motor and drive system

ACVVVF		Power Supply 380 - 415 V		50Hz		Roping 1:1		Lift Travel: ≤ 30mtr		
Model	Pass.	Payload (Kg)	Sync. Speed (mps)	G. Ratio	Motor (kW)	Motor Speed (Rpm)	Poles	Current (400V) (A)	Sheave Dia (mm)	Sheave Ropes (No./mm)
MR13i	8	544	0.67	2/53	3.6	1000	4	12.8	340	6xØ8
			1.00	1/43	5.5	1500	4	12.6	550	5xØ8
MR13i	8	544	0.75	1/52	5.5	1410	4	12.8	520	4xØ10
			1.00	1/43	5.5	1590	4	12.8	520	4xØ10
MR13i	8	544	0.75	1/52	5.5	1410	4	12.8	520	3xØ13
			1.00	1/43	5.5	1590	4	12.8	520	3xØ13
MR13i	8	544	0.75*	1/52	5.5	1350	4	12.8	550	3xØ13
			1.00*	1/43	5.5	1500	4	12.8	550	3xØ13

\* Max. lift travel 21 mtrs.

Machine Position: Top

Compartment Efficiency: 0,85

Conterweight balancing 50%

Assumed car weight 1.2 X duty load

Min. Wrapping Angle 150°

For travel height >30m compensating chains required

# MR13iH

## Geared Traction Machine

### Technical Specification

Static Load (Kg)	2600*
Gear Ratio	1/43 , 1/52 , 2/43 , 2/53
Power range (Kw)	5.5, 6.6
Brake Voltage (D.C.)	Standard- 110, 200 (Optional)
Sheave Range (mm)	340, 520, 550
Oil Capacity (ltr)	4.0 ( Synthetic Oil )
Machine weight (Kg)	230 (without bedplate)**

ACVVVF		Power Supply 380 - 415 V		50Hz		Roping 1:1		Lift Travel: ≤ 30mtr		
Model	Pass.	Payload (Kg)	Sync. Speed (mps)	G. Ratio	Motor (kW)	Motor Speed (Rpm)	Poles	Current (400V) (A)	Sheave Dia (mm)	Sheave Ropes (No./mm)
MR13iH	10	680	0.60*	1/52	5.5	1140	4	12.8	520	4xØ10
* Max. lift travel 15 mtrs.										
MR13iH	10	680	1.00	1/43	6.6	1590	4	15.8	520	4xØ10
MR13iH	10	680	1.00*	1/43	6.6	1590	4	15.8	520	3xØ13
* Max. lift travel 21 mtrs.										
MR13iH	10	680	1.00*	1/43	6.6	1500	4	15.8	550	4xØ10
* Max. lift travel 21 mtrs.										

ACVVVF		Power Supply 380 - 415 V		50Hz		Roping 2:1		Lift Travel: ≤ 21mtr		
Model	Pass.	Payload (Kg)	Sync. Speed (mps)	G. Ratio	Motor (kW)	Motor Speed (Rpm)	Poles	Current (400V) (A)	Sheave Dia (mm)	Sheave Ropes (No./mm)
MR13iH	10	680	0.63	2/43	6.6	1500	4	15.8	550	5xØ8
	15	1020	0.63	2/43	6.6	1500	4	15.8	340	8xØ8
	13	884	0.63	2/53	6.6	1230	4	15.8	520/550	4xØ10
	15	1020	0.63*	2/53	6.6	1320	4	15.8	520	4xØ10

\* Max. lift travel 15 mtrs.

Machine Position: Top

Compartment Efficiency: 0,85

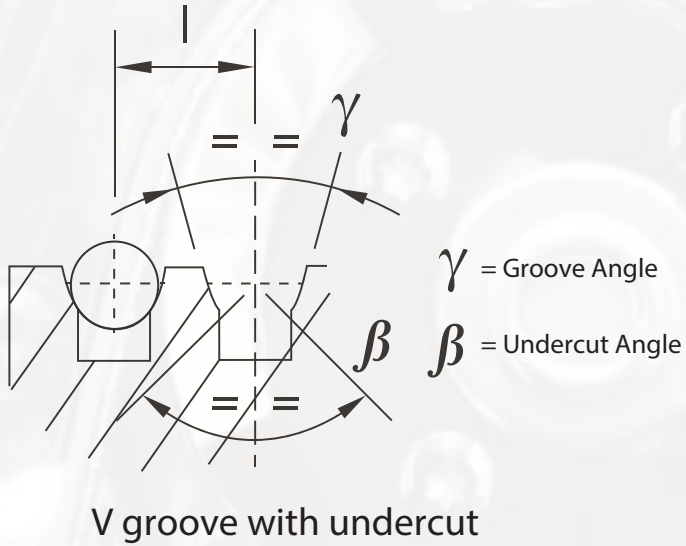
Counterweight balancing 50%

Assumed car weight 1.2 X duty load

Min. Wrapping Angle 150°

For travel height >30m compensating chains required





Groove angle ( $\gamma$ ) - 30°  
Undercut angle ( $\beta$ ) - 105°

Traction Sheave		n° rope x Dia mm	Groove centre distance (l) mm
Diameter mm	Width mm		
340	76	6 X 8	12
340	100	8 X 8	12
550	68	5 X 8	12
500	50	3 X 10	16
500	68	4 X 10	16
520	50	3 X 10	16
520	68	4 X 10	19
520	68	3 X 13	19
550	68	3 X 13	19

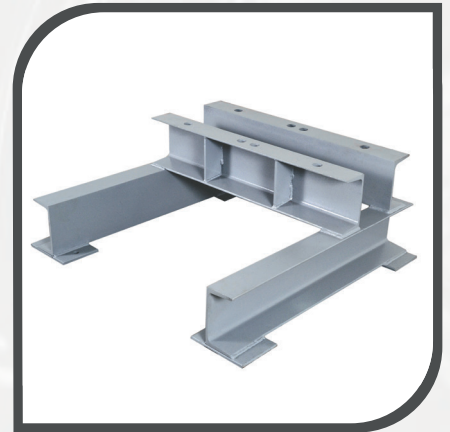
### High Bed Plate

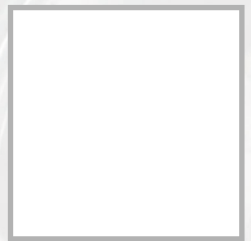
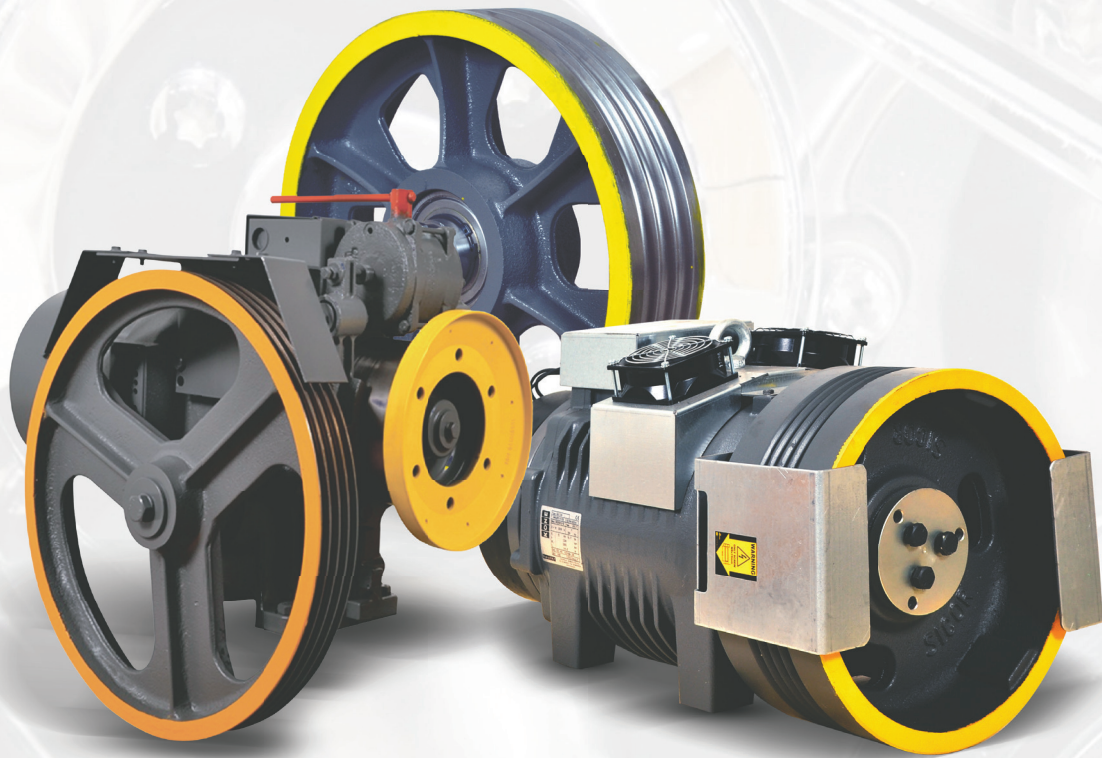


### Diverter Pulley



### Small Bed Plate





## M/s Sicor Engineering India Pvt. Ltd.

No.31, Survey No.91/7, 96/1, Nandhimesu Village Road,  
Santhavelur Village, Kandoor Post, Sriperumbudur-Taluk,  
Kanchipuram, District-602 108, Tamilnadu-India.

☎ +91- 8144837060 / 9962258111  
✉ sales@sicorindia.com      🌐 www.sicorindia.com

Product improvement is a continuous process & technical  
information herein is subject to change without notice.